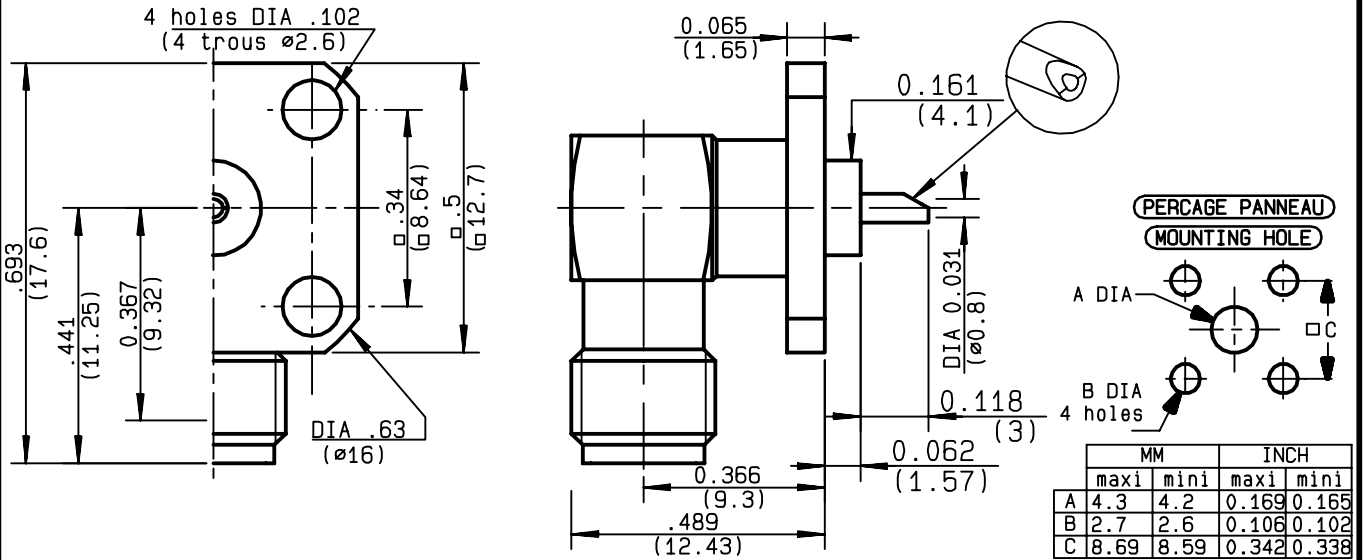


**RIGHT ANGLE SQUARE FLANGE JACK RECEPT.  
WITH SOLDER POT CONTACT**

**R125.653.001**  
**SERIES SMA**



|                                 |                 |                             |
|---------------------------------|-----------------|-----------------------------|
| NOMINAL IMPEDANCE               | <b>50</b>       | $\Omega$                    |
| FREQUENCY RANGE                 | <b>0-18</b>     | GHz                         |
| TEMPERATURE RATING              | <b>-65/+165</b> | $^{\circ}$ C                |
| V.S.W.R                         | <b>1.065</b>    | + <b>.0025</b> x F(GHz)Maxi |
| RF INSERTION LOSS               | <b>0.07</b>     | $\sqrt{F}$ (GHz) dB Maxi    |
| VOLTAGE RATING                  | <b>500</b>      | Veff Maxi                   |
| DIELECTRIC WITHSTANDING VOLTAGE | <b>1000</b>     | Veff Mini                   |
| INSULATION RESISTANCE           | <b>5000</b>     | M $\Omega$ Mini             |
| HERMETIC SEAL                   | <b>NA</b>       | Atm.cm <sup>3</sup> /s      |
| LEAKAGE (pressurized only)      | <b>NA</b>       |                             |
| MECHANICAL DURABILITY           | <b>500</b>      | Cycles                      |
| WEIGHT                          |                 | gr                          |
| SPECIFICATION                   |                 |                             |

|                            |                      |
|----------------------------|----------------------|
| CABLES :                   |                      |
| OTHERS CHARACTERISTICS     |                      |
| CABLE RETENTION            | <b>NA</b> N Mini     |
| CENTER CONTACT RETENTION   |                      |
| Axial force - mating end   | <b>27</b> N Mini     |
| Axial force - opposite end | <b>27</b> N Mini     |
| Torque                     | <b>2.8</b> cm.N Mini |
| RECOMMENDED TORQUES        |                      |
| Mating                     | <b>NA</b> cm.N       |
| Panel nut                  | <b>NA</b> cm.N       |
| Clamp nut                  | <b>NA</b> cm.N       |

|                 |                  |                        |                                       |
|-----------------|------------------|------------------------|---------------------------------------|
| CONNECTOR PARTS | MATERIALS        | FINISH                 | (all values are given in micrometers) |
| BODY            | STAINLESS STEEL  | PASSIVATED             |                                       |
| OUTER CONTACT   |                  |                        |                                       |
| CENTER CONTACT  | BERYLLIUM COPPER | GOLD 1.3 OVER NICKEL 2 |                                       |
| INSULATOR       | PTFE             | -                      |                                       |
| GASKET          |                  | -                      |                                       |
| OTHERS PIECES   |                  |                        |                                       |

|                |                   |                  |
|----------------|-------------------|------------------|
| ISSUE          | CREATION DATE     | FILE PART-NUMBER |
| <b>9840C00</b> | <b>03/06/1992</b> |                  |



SERIES

The information given here is subject to change without notice.  
Design changes may be in order to improve the product .

*Connect to the future*